

# PowerFloat



# Catalogue

## About Us:

Dennis Rach, was a partner in the 16 veterinarian practice of Moore Equine Veterinary Centre, Calgary, Alberta, Canada He has been in large animal practice with the firm continuously since 1970. As a practitioner, Dr. Rach designed several rotary equine instruments during the 1980s in an attempt to deliver a higher level of dental care to the equine patient. Other equine practitioners were also in need of the same type of equipment so Dr. Rach engaged the services of local machinists to make rotary instruments for other veterinarians.

During the mid 1990s Dr. Rach designed a motorized right angle-shaped floating device. This device worked better than he had expected. The unit stood the durability testing and functioned very well over the next few years so he pursued development and refinement of this new design. A patent was obtained for the new dental instrument and the production and sales of the PowerFloat began with its introduction to veterinarians at the AAEP meeting in Albuquerque, New Mexico in 2000. Over the next 2 years the initial core of veterinarians who purchased the PowerFloat recommended it to other fellow practitioners and the use of the instrument spread throughout the USA and Canada. As well as North America, the Powerfloat began to be sold and serviced through distributors in Australia, New Zealand, and Europe.

**Since the introduction of the PowerFloat, practitioners throughout the world have helped Dr. Rach make improvements and additions to the basic model. New dental procedures and techniques have been developed and new instrumentation continues to be added to the PowerFloat to deliver safe, superior dental care to the horse.**



**VISIT OUR WEBSITE TO SEE OUR FULL LINE OF PRODUCTS.**

## **Order Information:**

### **Order by Phone**

Our Calgary office operates Monday to Friday, 8am to 4:30pm MST (excluding Canadian holidays). Canadian and USA customers can place an order during business hours through our toll-free number:

**1-877-969-2233**

Customers outside of North America can place an order by dialing:

**+1 403-984-8775**

### **Visit our Website to order online**

PowerFloat.net

### **Order by Fax**

To place an order via fax, please fill a faxable page with all of the necessary order, contact and shipping information then fax the form to:

**(403) 984-7702**

## **See us on Facebook**

## **Warranty Information**

PowerFloat Inc. will repair or replace, without charge, any defects due to faulty materials or workmanship for a period of six (6) months from the date of purchase.

This warranty does not cover part failure due to normal wear, failure to follow recommended maintenance procedures or tool abuse.

## **Repair and Service**

Simply visit **powerfloat.net** and download the repair forms for your country and follow their instructions. Otherwise, all customers can call the PowerFloat office toll-free at **1-877-969-2233** for any repair or service assistance during the life of their PowerFloat product.

# Quick Connect Models

---

## Plug-in Quick Connect - PF0100



### Product Description:

A 120V AC Dewalt® variable speed motor equipped with a proprietary socket that accepts & releases all compatible Quick Connect attachments in seconds.

The Plug-in Quick Connect model operates up to a maximum of 4000 rpm in both Up and Down positions, and comes equipped with hands-free ("locked rpms") capabilities. Designed to be lightweight and durable to take on the most demanding equine dentistry conditions. This PowerFloat model is only compatible with AC electric sources and must always be operated in conjunction with a portable GFCI (*not included*).

# Quick Connect Models

---

## DCD Cordless Quick Connect - PF0210



### Product Description:

A variable speed 20V Dewalt® lithium ion motor with Nano™ technology. The DCD cordless PowerFloat model is equipped with a proprietary socket that accepts & releases all compatible Quick Connect attachments in seconds.

The DCD Cordless 20V Quick Connect model operates at up to a maximum of 4000 rpm in the Up and Down positions. Designed for fast, efficient floating of the upper and lower dental arcades in both indoor and outdoor conditions. The DCD comes standard with two large 20V batteries and a 1-hour quick charger for a longer running time.

# Quick Connect Models

---

## UltraLite Cordless Quick Connect - PF0300



### Product Description:

A variable speed brushless 20V Dewalt® lithium ion motor weighing in at just 3.2 lbs. The UltraLite PowerFloat is equipped with a proprietary socket that accepts & releases all compatible Quick Connect attachments in just seconds.

The UltraLite Cordless Quick Connect model operates at up to a maximum of 3250 rpm in the Up and Down positions. Designed to reduce shoulder and elbow discomfort from longer, intense sessions of equine dentistry. All UltraLite models come standard with two 20V batteries and a 1-hour quick charger.

# Quick Connect Models

---

## TL Cordless Quick Connect - PF0200



### Product Description:

A variable speed 20V Dewalt® lithium ion motor with Nano™ technology. The cordless PowerFloat motor is equipped with a proprietary socket that accepts & releases all compatible Quick Connect attachments in seconds.

The TL Cordless 20V Quick Connect model operates at up to a maximum of 4000 rpm in the Up and Down positions and comes with hands free (“locking rpms”) capabilities. Designed for fast, efficient floating of the upper and lower dental arcades in both indoor and outdoor conditions. All Cordless models come standard with two 20V batteries and a 1-hour quick charger.

# Pre-Configured Kits

---

## Quick Connect: Basic Kit #1



The **Basic Kit #1** is the introduction to the Quick Connect System that allows veterinarians to understand the feel and nuances of the Quick Connect PowerFloat before expanding into more advanced chamfer and rotary attachments.

These kits are designed for veterinarians that require dependable performance today, with the flexibility to add specialized attachments later, as needed. Float dental procedures with ease and unparalleled precision.

The Basic Kit #1 attachments:

### **Guarded Right Angle with Diamond Grinding Wheel**

Available in Plug-in (PF0101), DCD Cordless (PF0211), UltraLite Cordless (PF0301) and TL Cordless (PF0201) models.

**\*Includes all kit accessory items.**

---

## Quick Connect: Chamfer Kit #2



The **Chamfer Kit #2** is a collection of two of the most popular and heavily-used Quick Connect tools on the market.

Designed to see veterinarians through countless dental procedures, the combination of the *Guarded Right Angle* and the *Un-Guarded Right Angle* can easily handle the majority of advanced equine malocclusions.

The Chamfer Kit #2 attachments:

### **Guarded Right Angle with Diamond Grinding Wheel**

### **Un-Guarded Right Angle with Chamfer Burr**

Available in Plug-in (PF0102), DCD Cordless (PF0212), UltraLite Cordless (PF0302) and TL Cordless (PF0202) models. **\*Includes all kit accessory items.**

---

**\* Kit accessory items: Pelican Carry case, Lg & Regular Gags, Grinding Wheel Removal Tool, Grease Gun, Grease Refill 15 oz, Headlamp, Cleaning Cloth and Scrub Brush.**

POWERFLOAT.NET / INFO@POWERFLOAT.NET / PHONE: 1-877-969-2233



# Pre-Configured Kits

## Quick Connect: Chamfer & Rotary Kit #3



The **Chamfer & Rotary Kit #3** is a collection of the two most popular and heavily used Quick Connect tools with the addition of the Long rotary shaft to use on the upper and lower 11's.

The Chamfer & Rotary Kit #3 attachments:

**Guarded Right Angle with Diamond Grinding Wheel**

**Un-Guarded Right Angle with Chamfer Burr**

**Long Rotary with Upper & Lower 11 Burrs**

Available in Plug-in (PF0103) , DCD Cordless (PF0213) , UltraLite Cordless (PF0303) and TL Cordless (PF0203) models.

**\*Includes all kit accessory items.**

---

## Quick Connect: Complete Kit #4



The **Complete Kit #4** is the complete collection of the most popular and heavily used Quick Connect tools on the market. Switch between these attachments with ease.

The Complete Kit #4 attachments:

**Guarded Right Angle with Diamond Grinding Wheel**

**Un-Guarded Right Angle with Chamfer Burr**

**Long Rotary with Upper & Lower 11 Burrs**

**Short Un-Guarded with Apple Core Burr OR Short Guarded with Diamond Wheel**

Available in Plug-in (PF0104), DCD Cordless (PF0214), UltraLite Cordless (PF0304) and TL Cordless (PF0204) models.

**\*Includes all kit accessory items.**

# Quick Connect Attachments

---

## Guarded Right Angle Attachment - PF0403



A long 14" shaft ending in a 90° bend that houses the specially-guarded grinding surface. Quickly connects in the up or down positions for floating of the upper or lower dental arcades. The low-profile design of the right angle allows access to all areas of the dental arcades in horses and some miniature horses. Included standard with all Quick Connect Kits, as well as sold separately.

\*Stainless Steel (PF0403) and Aluminum Shafts (PF0403-A) Available.

## Un-Guarded Right Angle Attachment - PF0402



A long 14" shaft ending in a slim 90° bend with a un-guarded head. Quickly connects in both left or right horizontal positions and accepts Chamfer, Apple Core, and other PowerFloat accessory burs. Our most versatile Quick Connect attachment.

\*Stainless Steel (PF0402) and Aluminum Shafts (PF0402-A) Available.

## Short Guarded Right Angle Attachment - PF0405



This shortened version of the guarded right angle is used for the reduction of incisor malocclusions. It is designed for veterinarians who wish to have an attachment that allows incisor teeth reductions from a closer range than can be achieved with the longer right angle attachment.

# Quick Connect Attachments

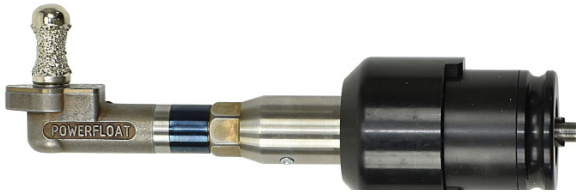
## Long Rotary Attachment w/Upper & Lower 11 Burrs - PF0400UL



A long 13 inch straight rotary shaft that comes with upper and lower 11 burrs. Quickly connects in both up or down positions. Able to effectively reach the back edge of upper and lower 11 molars.

- Compatible with Pony Rotary Burr Set (PF0545)- Sold separately.

## Short Un-Guarded Right Angle Attachment - PF0407



This shortened version has an un-guarded right angle which allows the use of an apple core burr. The apple core burr is introduced into the mouth end on, while the free hand abducts the corner of the mouth to tighten the mandibular frenulum, allowing gentle contouring and smoothing of the sharp edges of the lower front cheek teeth. The upper front cheek teeth are contoured in a similar manner.

## Short Rotary Attachment - PF0401

A short 2 ½ inch straight rotary shaft that attaches to Quick Connect models in the up or down positions. This attachment is used for the reduction of incisor malocclusions.



Included accessories:



1/2 inch Closed Guard

1/2 inch Round-nosed Carbide burr

# RECIPROCATING PERIOTOME

---

## Reciprocating Periotome - PF0408



The PowerFloat reciprocating periotome is a specialized right angle shaft that attaches to any of the PowerFloat quick connect drills. The head of the shaft contains a built in specialized collet into which different lengths of 1mm thickness flexible blades are inserted and secured with a set screw. Powered reciprocating strokes cause the blades to penetrate and cut deeper into the periodontal ligament attachments in preparation for cheek teeth extractions. This tool significantly shortens the time required to extract equine cheek teeth.

## Reciprocating Periotome Blades - PF0554



Set of 3 - Reciprocating periotome blades are composed of flexible stainless steel. Blades are 1mm in thickness and come in 1 1/4", 1 1/2" and 1 3/4" lengths. Blades are inserted into the collet of the reciprocating periotome attachment and secured with a set screw.

# ROTATING PERIOTOME

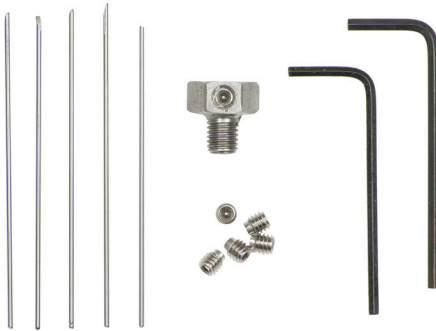
---

## Rotating Periotome c/w Collet & Rod Set- PF0409



The PowerFloat Rotating Periotome is an unguarded right angle shaft into which a specialized collet and titanium rod set is installed. The rotating periotome is used to drill multiple holes deep into the periodontal space in order to destroy periodontal tissue during extraction procedures. This tool significantly shortens the time required to extract equine cheek teeth.

## Collet & Rod Set for Rotating Periotome - PF0548

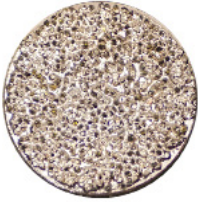


The Collet and Rod set is compatible with either the PowerFloat guarded or unguarded right angle attachment. The collet and rod system is installed in to the right angle shaft to convert it to a rotating periotome to allow drilling of multiple holes deep into the periodontal space in order to destroy periodontal tissue during the extraction procedure.

# Grinding Wheels & Burrs

---

## Diamond Grinding Wheel - PF0500



The wheel of choice among veterinarians and the highest performing grinding wheel available for PowerFloats.  
Runs smoothly and quietly with minimal vibration.

\*Threads onto the Guarded Right Angle attachment.



## Solid Grinding Wheel - PF0502

The Solid Carbide wheel has a cut pattern that is designed for the rapid reduction of dominant teeth. Its rounded radius design assists in keeping the cutting surface from contacting soft tissue.

\*Threads onto the Guarded Right Angle attachment.



## Upper 11 Burr - PF0505

Designed to smooth the caudal sharp edges and hooks on the last upper molars (111 / 211).

\*Threads onto the Long Rotary attachment.



## Lower 11 Burr - PF0506

Shaped to smooth the caudal sharp edges and hooks on the last lower molars (311 / 411).

\*Threads onto the Long Rotary attachment.

# Grinding Wheel & Burrs

## Chamfer Burr - PF0503



Enables reduction of sharp enamel points on arcades at variations of 45°.

Two models available:

PF0503 - Regular Chamfer Burr

PF0504 - Small Chamfer Burr

\*Threads onto the Un-Guarded Right Angle Attachment.



## Apple Core Diamond Burr

Used to contour upper and lower front teeth (06s), and canine teeth.

Three models available.

PF0512 - Small Apple Core Burr

PF0513 - Large Apple Core Burr

Pf0513-F - Flat Ended Apple Core Burr

\*Threads onto the Short and Long attachments.



## Diastema Burrs Set of 4 - PF0511



The set of carbide diastema burrs are graduated in shape and width to allow gradual widening of various types of diastema primarily seen in geriatric horses.

*Tapered, Conical, Slimline and Periodontal Burr*

# Dental Speculums

## PowerFloat Speculum (screw type) - PF0702

Heavy-duty speculum has two (2) threaded tightening knobs providing smooth, easy opening of the incisor bite plates. Extra wide incisor plates prevent the teeth from slipping off the bite plate.

Has a large side port for easy access to the corners of the mouth. The side arm connections to the incisor plates are machined in such a way to prevent side arm pressure on the horse's cheek.



- Bi-Directional: can be positioned with tightening knobs up or down.
- Arrow indicator on the side arm pivot indicates when optimum opening width for most horses has been reached (3.5 inches, or 9 cm wide).
- A poll strap loop is included for emergency removal of the speculum.

## Regular Bite Plates - PF0714



## Wide Bite Plates - PF0715





# Dental Speculums

## McPherson Speculum (ratchet-type) - PF0700



The stainless steel Mcpherson style speculum is an essential accessory for equine dentistry. This easy to operate speculum is made of high quality, stainless steel construction and is suitable for horses of all breeds and sizes, as well as a smaller model for miniature horses and small ponies.

Durable biothane straps are long lasting. The side arms are designed so that they do not close into the horse's cheek (spreader effect). The ratchet mechanism is designed for easier opening than all other McPherson style speculums on the market. Six dependable ratchet notches for easier, smaller, incremental opening. The average opening range of 3 1/2" (8.90 cm) is set on the 5th notch. This graduated feature makes this speculum much easier to open than other speculums of similar design.

## Parrot Bite Plates - PF0707



# Dental Halter

## Dental Halter - PF0600

Heavy duty webbing and hardware make this halter very durable. Rope and cleat system attached to the nose band allows the veterinarian to adjust the horse's head to a comfortable position. The chin support is made from high molecular weight composite, which is covered with reinforced tubing.



\* Comes in Horse (PF0600) and Pony (PF0601)sizes.

## Rope and Cleat Set PF0602



## Rope Only PF0604



## Cleat Only PF0603



The adjustable rope and cleat system is attached to the nose band of the PowerFloat dental halter. The cleat is made from heavy duty composite and can support a load of 2000 Kg. Flip out action releases the rope from the lock position. Very safe to use due to the quick release system.

## Incisor Gags - 3 sizes

Reinforced mouth gags which can be placed in the interdental space of the horse's mouth.



Mouth gags allow the mouth to be held open so that dentistry work can be done on incisors or canine teeth. Knots in the elastic rope can be easily re-adjusted to create a custom fit for all sizes. Large (PF0704), regular (PF0703) and pony (PF0712).

# Water Mist/Perio Systems

## Water Mist System - PF2000



Our misting nozzle delivers a fine mist which eliminates heat production from grinding surface and reduces inhalation of tooth dust. Dust free visualization. Utilizes minimal water volume. Dual valve design allows for two attachments to be utilized without switching hardware. This system also comes with a perio spray attachment.

## Perio Spray System - PF2001

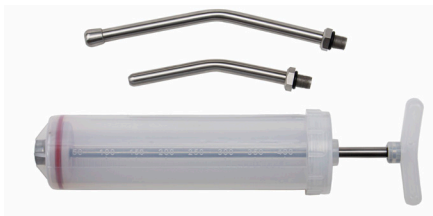
The PowerFloat Perio Spray System delivers a high pressure spray through a Right Angle nozzle which fits into periodontal pockets on the lingual or buccal sides of the teeth.



## Dosing/Drenching Syringe - PF1215

Dosing / Drenching Syringe with two nozzles, 400cc for use in Equine Dentistry to clear hay or food particles from horses mouth prior to floating teeth.

High quality syringe comes with two alternate length stainless steel nozzles. Syringe has the capacity of 13 oz, making it an ideal choice for starting dental procedure.



# PowerLite IV

---



# PowerLite IV

---

## PowerLite IV - PF0800

PowerLite IV is a fully portable, battery-operated light source designed to attach to the upper incisor plate of an equine dental speculum. Its compact, water-resistant design makes this product the most reliable and convenient light source available to practicing veterinarian's.

The light can be concentrated on any area of the mouth by simply changing positions.

PowerLite IV eliminates the need for cumbersome head-mounted or handheld lights, giving you a freely mobile, high-intensity light source to clearly illuminate your workspace without significantly reducing the opening between the incisor plates. A tool such as this also aids veterinarians in educating horse owners about the benefits of equine dentistry.

### **Product Info:**

- Uses the latest high powered LED technology. 2X the brightness of the PowerLite III.
- Powered by lithium-ion rechargeable batteries (x6) for extended operation between charges. High intensity: 13 hours, Low intensity 19 hours. Batteries included.
- External 6 position charger.
- Simple source light head attachment and positioning using powerful neodymium magnets.
- Multiple attachment methods included for securing the power supply to the work space depending on your preferences.
- Durable, water and corrosion resistant design.
- Includes speculum adapter plate for non-ferrous speculum incisor plates.
- Carrying case included for secure, organized storage of the PowerLite IV and accessories.
- Plug Adapter available for international clients converting 110v to 220v.

# Extractors & Forceps

## Cap Extractor w/ Speculum Opener - PF0903



Reynolds-style, 16 inch (40.6 cm) cap extractor, with machined grooves in the extractor head for use as a mouth speculum opener. The cap extractor's jaws can be used to pry open full mouth speculums in situations where the horse is biting down onto the incisor plates hard enough that the speculum is difficult to open by hand.

## Long Nosed Fragment Forcep- Spring Action - PF0925



The Long Nosed Fragment forcep have long narrow jaws that allow access to many tooth fragments which are not accessible with most fragment forceps. The long nosed design gives extra grasping strength of tooth fragments along with the serrated, 2" long jaws. 16" Long. Stainless Steel construction.

## Concave Cap - Geriatric Forcep 17" - PF0914



Low-profile concave design is excellent for grasping and extraction of retained caps, sagittal fracture fragments, and geriatric teeth. This forcep is one of the most versatile extraction forceps that a veterinarian can have for routine dentistry.

## Four Prong Extraction Forcep 19" - Horse - PF0907



Horse Size: The low-profile four (4) prong forcep fits onto a wider variety of cheek teeth than any other design on the market. It's heavy duty design makes it the forcep of choice for a large percentage of upper and lower cheek teeth extractions.

# Extractors & Forceps

## PowerFloat Incisor Extraction Kit - PF0937



The PowerFloat incisor extraction kit is used for extracting and loosening equine incisors, as well as wolf teeth and fragments. Kit comes with six instruments and a wallet for safe keeping and protection. Stainless Steel Construction.

## Offset Forcep 8" - PF0926



Stainless steel wolf tooth forcep. Concave jaws are excellent for grasping a variety of sizes and shapes of wolf teeth.

## Wolf Tooth Forcep 9 1/2" and 11"



Stainless steel wolf tooth forcep. Broad-knurled handles provide excellent grip. Concave jaws are excellent for grasping a variety of sizes and shapes of equine wolf teeth.

Comes in 2 sizes:

PF0935 - Wolf Tooth Forcep 9 1/2"

PF0906 - Wolf Tooth Forcep 11"



# Elevators/Explorers

## PowerFloat Wolf Tooth Elevator Set - PF0936

Handle with non-slip, cutting/elevator design makes wolf tooth extractions easy. After local anesthesia, the elevators are secured on the caudal aspect of the wolf tooth. A hammer is used to gently percuss the cutting edge up into the ligamentous attachment. The long offset handle gives adequate leverage to elevate wolf teeth.



## Burgess Hammer - PF0924

Stainless Steel Dental Hammer, used with modified wolf tooth elevator set or incisor extraction set.



## Dental Explorer 13" - PF0929

Equine flexible taper point Stainless steel - For Ponies



## Dental Explorer 15" - PF0930

Equine flexible taper point Stainless steel - For Light horses



## Dental Explorer 18" - PF0928

Equine flexible taper point Stainless steel - For Large Horses





# Elevators

---

## Periosteal Elevator set of 3 - PF0931

Periodontal Elevator OR Root Elevator Set:

Set of 3 T handles allows a veterinarian to choose rotational placement and working height of sizes small, medium and large curved elevators.

The elevators can be positioned at a variety of up and down angled positions.



## Wolf Tooth Elevator 8" - PF0909



Stainless steel wolf tooth elevator with a bulb handle. This elevator is used to elevate the wolf tooth periodontal ligament without the use of a speculum or via the side port of a full mouth speculum.

## Wolf Tooth Elevator 12" - PF0910



Stainless steel wolf tooth elevator with a bulb handle. This elevator is long enough to access wolf teeth with the full mouth speculum in place.

# Long Rotary Burr Sets

---

## Long Rotary Burr Set - Upper and Lower 11 - PF0546

Upper/Lower 11- An accessory kit to adapt the long rotary shaft to effectively reach the back edge of the upper and lower 11 molars.



## Long Rotary Burr Set - Pony - PF0545

Pony Set - An accessory kit to adapt the long rotary shaft to allow floating access to all areas of the cheek teeth using a diagonal over-the-tongue approach with a 3/8" carbide burr. This is a must for dental work in all mini's and donkeys.



# Spreaders

---

## Spreaders (3 sizes)

Stainless Steel Molar Spreaders designed to close at 90° angles to the interproximal space. Comes in 3 sizes. Necessary instrument for complex molar extractions.

### 3mm Thin - PF0900



### 5mm Medium - PF0901



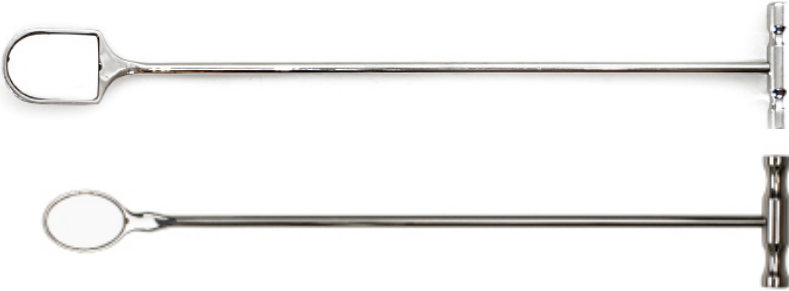
### 6mm Thick - PF0902



# Hand Tools

---

## Dental Mirror - PF1002



Stainless steel Dental Mirror designed for optimal viewing of all intra-oral structures including occlusal surfaces, periodontal pockets, and diastemata. 18.5 inch (47 cm) stainless steel dental mirror with convenient "T" handle. The 10° tilted endpiece contains a 2 inch (5 cm) diameter mirror. (*Replacement mirrors available*)  
\*Also available in Oval (PF1006) design.

## Dental Probe - PF1001



Stainless steel dental probe with 18 inch (45 cm) handle and 1.5 inch (3.8 mm) hook-style end with marker increments every 5 mm. Knurled handle for better grip. Designed for examination of periodontal attachments to equine cheek teeth.

## Dental Pick - PF1000



18 inch (46 cm) stainless steel dental pick with T-handle for easy manipulation in the caudal aspect of the horse's mouth. Pick end height is 1.45 inch (38 mm). Right angle design for easy access to deep areas at the caudal aspect of the mouth .

# Accessories

## Wheel Removal Tool - PF1203

Custom-designed hand-tool built to precisely match PowerFloat grinding wheels for quick and easy removal. Tightly grip a wheel's edges without adding unnecessary wear. Grip handles allow for greater leverage when removing stubborn wheels. The best tool available to remove grinding wheels.



## Grease Gun - PF1201

6.5 inch (16.5 cm) long taper point grease gun. The tapered end fits into the 2 grease ports located on the right angle of the PowerFloat. The grease is injected into the grease ports with force through a plunger effect.



## 15 oz Lubricant For Grease Gun - PF1202

Premium food machinery approved grease. Outstanding corrosion and rust resistance. Excellent water resistance which is very important to alleviate the effects of moisture exposure to the gears.



## Pelican® Carry Case - PF1200

All of our kits are packaged in the Pelican® Storm IM2600 Case.

Watertight, lightweight and rugged.  
Double layered soft grip handle.  
Two press & pull latches.  
Two molded in hasps for padlocks.  
Vortex® Valve  
Lifetime Guarantee of Excellence.



# Mini's & Donkey's

---

## Dental Halter - Pony - PF0701



This pony sized dental halter comes with the heavy duty webbing and hardware that make this halter very durable. Rope and cleat system attached to the nose band allows the veterinarian to adjust the ponies head to a comfortable position. The chin support is made from high molecular weight composite, which is covered

## Dental Speculum - Pony - PF0701



The stainless steel Mcpherson Pony Style Speculum is an essential accessory for working with miniature horses, small ponies and donkeys.

This smaller design has all the features of the horse size speculum. This includes side arms that are designed so that they do not close into the ponies cheek. Six dependable ratchet notches for easier, smaller, increment opening.

## Incisor Gag - Pony - PF0712



This pony sized mouth gag allows the mouth to be held open so that dentistry work can be done on incisors and canine teeth in ponies and minis. Elastic rope can be adjusted to create a custom fit.

---

### Additional attachments for Mini's & Donkey's:

Short Guarded Right Angle with Diamond Grinding Wheel (PF0405)  
Short Un-guarded Right Angle with small Apple Core Burr (PF0407)  
Short Rotary Attachment with 1/2" burr (PF0401)

# Mini's & Donkey's

---

## Chamfer Burr - Small - PF0504



This pony size chamfer burr enables reduction of sharp enamel points on arcades at variations of 45°.

## Diamond Apple Core - Small - PF0512



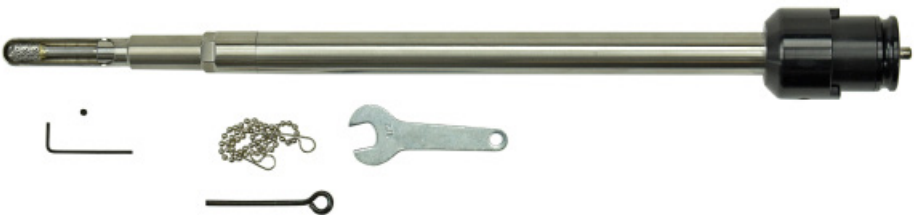
Used to contour upper and lower front teeth (06s), and canine teeth.

## Four Prong Extraction Forcep 19" - Pony - PF0908



Pony Size: A low-profile design and smaller size makes this four (4) prong forcep the best overall instrument to extract cheek teeth in small ponies and miniature horses.

## Long Rotary Attachment - Pony - PF0400P



This Long Rotary guarded shaft with a 3/8" carbide burr allows access to all areas of the cheek teeth using a diagonal over-the-tongue approach. This is a must for dental work in all mini's and donkey's.

- Compatible with Upper & Lower 11 Burr set (PF0546) - Sold separately



**Phone Toll Free:  
1-877-969-2233**

**PowerFloat Inc.  
#112, 7865 - 56th Street SE  
CALGARY, AB T2C 5S7  
CANADA**